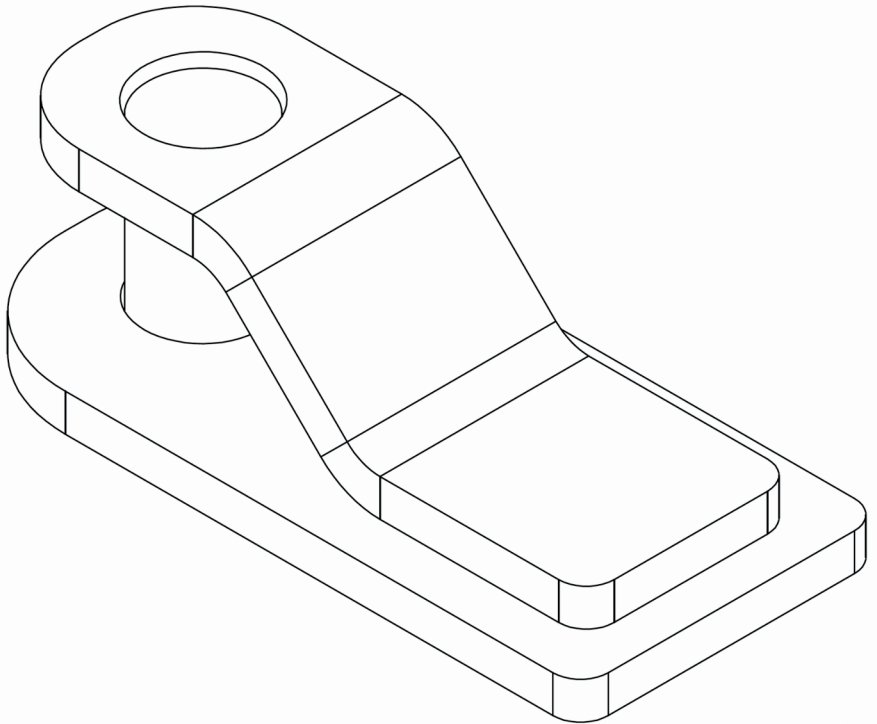


DRAWBAR SAFETY CHAIN HOLDER

CHAIN-HOLDER



Packed by:

Date:



PRODUCT DESCRIPTION

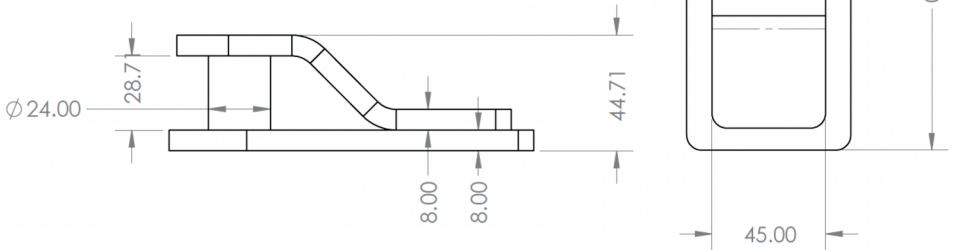
The Couplemate™ CHAIN-HOLDER (“CM551-3”) is a weld-on safety chain holder for trailer drawbars. Rated to a 3500kg maximum ATM, the component suits 10mm and 13mm chain (and equivalent hammerlocks).

Each unit is manufactured in Brisbane, Australia.

Materials

The unit is made of two steel components:

- Base & Top Plate: G250
- Retaining Pin: 4140



SAFE APPLICATION

The type and size of your chain connection largely depends on your Aggregate Trailer Mass (ATM). The CM551-3 has been tested and rated to a maximum 3500kg ATM per ADR 62/02 requirements.

Please ensure the tow vehicle, towbar, and all other components are fit for application prior to use.

2500KG MAXIMUM ATM

Australian trailers 2500kg ATM or under must have (at least) one safety chain connection compliant with AS 4177. For this ATM application, a minimum of one CM551-3 is required for the drawbar.

3500KG MAXIMUM ATM

Australian trailers over the 2500kg ATM mark, and up to 3500kg ATM, must have two safety chain connection compliant with AS 4177. For this ATM application, two CM551-3 are required for the drawbar.

WELD INSTRUCTIONS

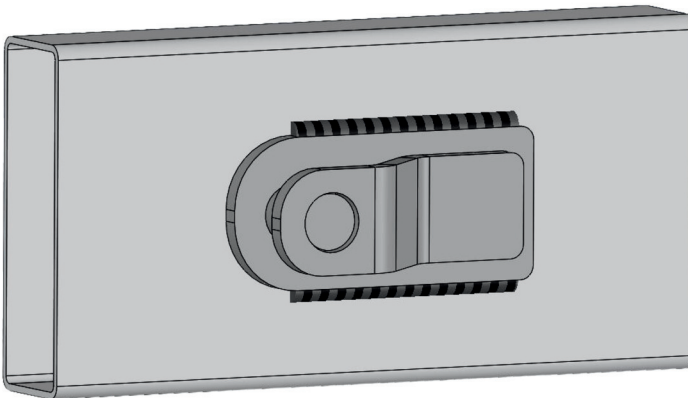
The component must be welded onto a drawbar material of 3mm (or thicker).

Orientation

Ensure the long side of the holder is horizontal with the ground. The retaining pin must point toward the front of the trailer (i.e. toward the tow vehicle).

Installation

Weld completely along the top and bottom sides of the component. Ensure the weld leg is a minimum of 6mm (or thicker). Please refer to the image for a visual guide.



CONTACT COUPLMATE™

Brisbane Headquarters:

136 Glenora Street, Wynnum
Queensland 4178
Australia

Office Phone

+61 7 3348 3822

General Email

sales@couplemate.com.au

OUR CARE, YOUR WARRANTY

Our goods come with guarantees that cannot be excluded under the Australian Consumer Law. You are entitled to a replacement or refund for a major failure and compensation for any other reasonably foreseeable loss or damage. You are also entitled to have the goods repaired or replaced if the goods fail to be of acceptable quality and the failure does not amount to a major failure.

Continued next page.

Couplemate™ is a manufacturer and vendor of high-quality towing, trailer, and caravan components. Couplemate™ Core Goods and Custom Work are guaranteed to be free of defects for the service life of the product when used as intended, as warranted under Couplemate™ Warranty Policy (“Our Care, Your Warranty”). Warranties are in addition to your consumer guarantee rights under the Australian Consumer Law.

In the event a product be believed to be defective, cease use immediately and lodge a Warranty Claim at: www.couplemate.com.au/warranty/submit-claim. Couplemate™ requires the Claim Form to be filled in its entirety and to be submitted by the Customer with photos of the defective Goods (including a photo of the trailer VIN plate). Completed forms are to be emailed to: sales@couplemate.com.au.

The completed Claim Form will be forwarded to multiple Couplemate™ departments (Engineering, Manufacturing, Management, Procurement) to investigate the issue and as such the Customer may be requested to provide additional information and photos.

Couplemate™ aims to review Warranty Claims within 14 business days of submission and will notify the Customer that the claim has been received. This time frame is subject to change, so Customers requiring urgent parts are recommended to place an order via phone: 07 3348 3822.

Couplemate™ reserves the right to inspect and assess Goods believed to be defective. In the event that a visual inspection is required, the component must be returned to: 136 Glenora Street, Wynnum 4178 Queensland, Australia.

Whereby Goods can be posted or easily returned, it is the Customer’s responsibility to return the Goods to Couplemate™ for inspection. Customers are to retain a copy of receipts for transportation/postage costs. Whereby Goods cannot be posted or easily returned, Couplemate™ can organise and pay for collection/transportation of the Goods for inspection. Prior to collection, Couplemate™ will issue the Customer an estimated cost.

If a fault is found, Couplemate™ will issue a remedy under the ACL as well as reimburse the Customer for any reasonable return post costs. If a fault is not found, Couplemate™ will be unable to provide a remedy and, where applicable, may charge for transportation and reasonable costs as disclosed. Couplemate™ can return inspected Goods at the Customer’s expense (estimated costs will be provided prior to requesting a visual inspection).

Warranties are non-transferrable and Couplemate™ requires satisfactory proof of purchase prior to issuing a remedy. Couplemate™ will not provide a remedy wherein Goods are subject to misuse, abuse, neglect, or otherwise abnormal use and the same applies to fatigued Goods (i.e. Goods beyond service life), Goods with Expected Wear, or faults arising from improper installation. Removal, breakdown, or part thereof, on surface coatings constitutes Expected Wear and is not covered by Couplemate™ warranty.

It remains the full responsibility and liability of the Customer, or their chosen installer, to ensure proper installation and compliance with all relevant standards, guidelines, legislation, and governing bodies. Couplemate™ shall not be held responsible nor liable for components, spare parts, Custom Work, or other Goods supplied to the Customer that are misused, abused, neglected, or otherwise abnormally used and/or installed resulting in a breach of legislation or regulation on any vehicle, powered or unpowered.