

# TRAILER SAFETY CHAIN HOOK SET

## INSTALLATION GUIDE

### STEP 1



### STEP 2



### STEP 1

Place the first half of the hammer lock through the hitch point on either side of the tow bar.

### STEP 2

Place the other half of the hammer lock through the eye of the hook.

### STEP 3



### STEP 4



### STEP 3

Bring the two half's of the hammer lock together and insert the locking pin partially in, this will hold the part together.

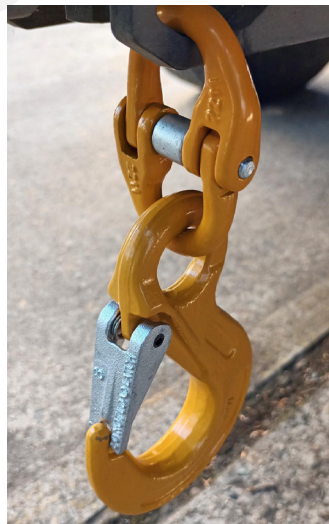
### STEP 4

Insert the locking collar with the recessed side of the collar facing the direction of the pin and push the pin in until it holds the collar in place.

### STEP 5



### COMPLETED UNIT



### STEP 5

Using a hammer, begin to tap the pin in the through the collar until it emerges on the other side of the hammer lock, this process may take a minute or two.

IF USING TWO CHAIN'S PLEASE REPEAT THE PROCESS ON THE OTHER HITCH POINT OF THE TOW BAR.

Once completed YOU ARE READY TO TOW ON YOUR ADVENTURE!

AUSTLIFT Lifting your business to a higher level.

#### NSW Head Office

📍 43 Frank Street  
Wetherill Park, NSW 2164  
☎ 02 9757 2277

#### WA Office

📍 42 Mulgal Road  
Malaga, WA 6090  
☎ 08 9248 6674

#### QLD Office

📍 7 Durbell Street  
Acacia Ridge, QLD 4110  
☎ 07 3272 0777

#### VIC Office

📍 475 Dohertys Road  
Truganina, VIC 3029  
☎ 03 9314 5525